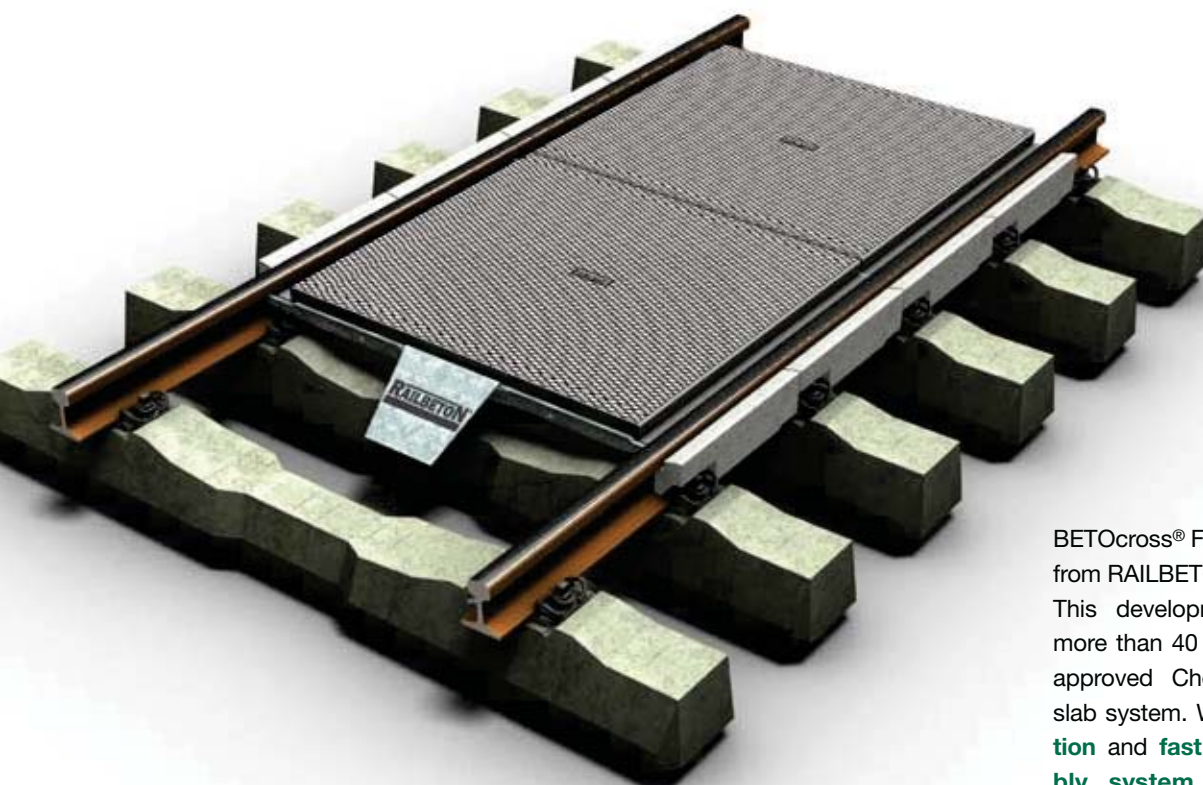


BETOcros[®] F

Level crossing system



INNOVATION IN CONCRETE



BETOcros[®] F is the new level crossing from RAILBETON

This development study is based on more than 40 years of experience on the approved Chemnitz GÜP large-surface slab system. With its **modular construction** and **fast and easy-to-use assembly system**, the **sleeper-supported BETOcros[®] F overcross** offers faster and flexible application. Using high-strength concrete guarantees a **high level of frost-de-icer resistance** and great **abrasion resistance**. The BETOcros[®] F system is an internal development of RAILBETON dimensioned for load-class Bk 32 RStO 12. We would be glad to inform you of the other steps in development soon. RAILBETON is in possession of the industrial property rights.



RAILBETON HAAS KG ■ D-09114 Chemnitz ■ Fischweg 27
Phone +49 0371 4725-0 ■ Fax +49 0371 4725-100
info@RAILBETON.de ■ www.RAILBETON.de

RAILBETON[®]